

Ph.D. FELLOWSHIP OPPORTUNITIES

BENEFITS

- + \$38,000 yearly stipend
- + Payment of full tuition and required fees
- + Yearly program review participation
- + Annual professional development allowance
- + Renewable up to four years



The Department of Energy National Nuclear Security Administration Stewardship Science Graduate Fellowship (**DOE NNSA SSGF**) provides outstanding benefits and opportunities to students pursuing degrees in stewardship science areas, such as **properties of materials under extreme conditions and hydrodynamics, nuclear science, or high energy density physics.**

The fellowship includes a 12-week research practicum at Lawrence Livermore National Laboratory, Los Alamos National Laboratory or Sandia National Laboratories.

APPLICATIONS DUE 1.11.2023

ELIGIBILITY: U.S. CITIZENS WHO ARE SENIOR UNDERGRADUATES OR STUDENTS IN THEIR FIRST OR SECOND YEAR OF DOCTORAL STUDY.

www.krellinst.org/ssgf

The Department of Energy National Nuclear Security Administration Laboratory Residency Graduate Fellowship (**DOE NNSA LRGF**) gives students the opportunity to work at DOE NNSA facilities while pursuing degrees in fields such as **engineering and applied sciences, physics, materials, or mathematics and computational science.**

Fellowships include at least two 12-week research residencies at Lawrence Livermore National Laboratory, Los Alamos National Laboratory, Sandia National Laboratories or the Nevada National Security Site.

APPLICATIONS DUE 3.15.2023

ELIGIBILITY: U.S. CITIZENS WHO ARE ENTERING THEIR SECOND (OR LATER) YEAR OF DOCTORAL STUDY.

www.krellinst.org/lrgf

These equal opportunity programs are open to all qualified persons without regard to race, color, national origin, sex, disability, or any other characteristics protected by law.

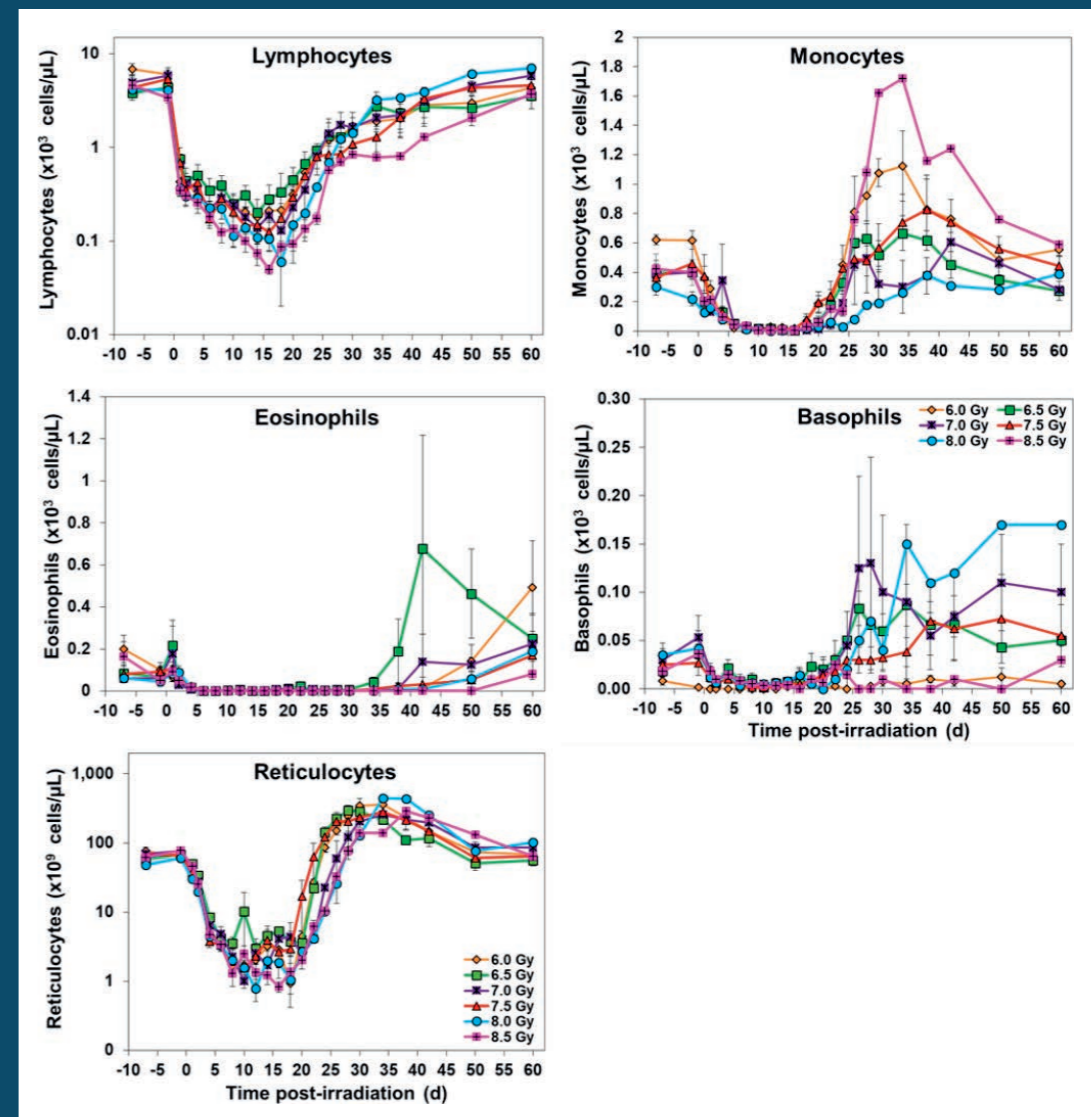


Radiation Research

Radiation Research

Volume 198, Number 6, December 2022

Pages 545-646



In this issue and on the cover: Singh et al., "Determination of Lethality Curve for Cobalt-60 Gamma-Radiation Source in Rhesus Macaques Using Subject-Based Supportive Care"



